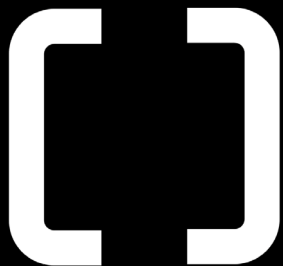


NEXUS ONE
FOR TRUE
COFFEE MASTERS



WWW.AREMDE.COM.AU
@AREMDEOFFICIAL
INFO@AREMDE.COM.AU

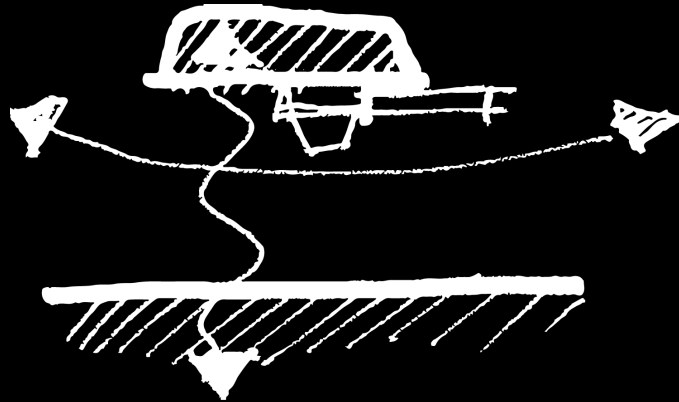


AREMDE

REMOVING THE WALL OF STEEL

The AREMDE partners came together: a designer, an engineer, an entrepreneur and a marketer. From different continents and cultures, but with one common goal: to remake the future of professional coffee.

They disliked what they saw in almost every coffee bar around the world. A wall of steel: also known as the traditional bulky espresso machine. Put in front of the cafe, you separate the barista from their customers. Placed against the back, it forces the baristas to turn their back on people. Where others accepted this as a given, we saw an opportunity. And we called it NEXUS One.



NEXUS ONE

FOR TRUE COFFEE MASTERS

Every problem is also a window of opportunity. You just have to open it up. And that's what we did. We literally designed a hole in the wall. Created less machine and more experience. So the connection and interaction between customer and barista is optimised to the max.

Real magic happens when you are able to translate state of the art technology into ease of use. To let all engineering possibilities available work together in order to produce a quality product like no other. We think we did with our NEXUS. So please, play it like a pro!





NEXUS ONE

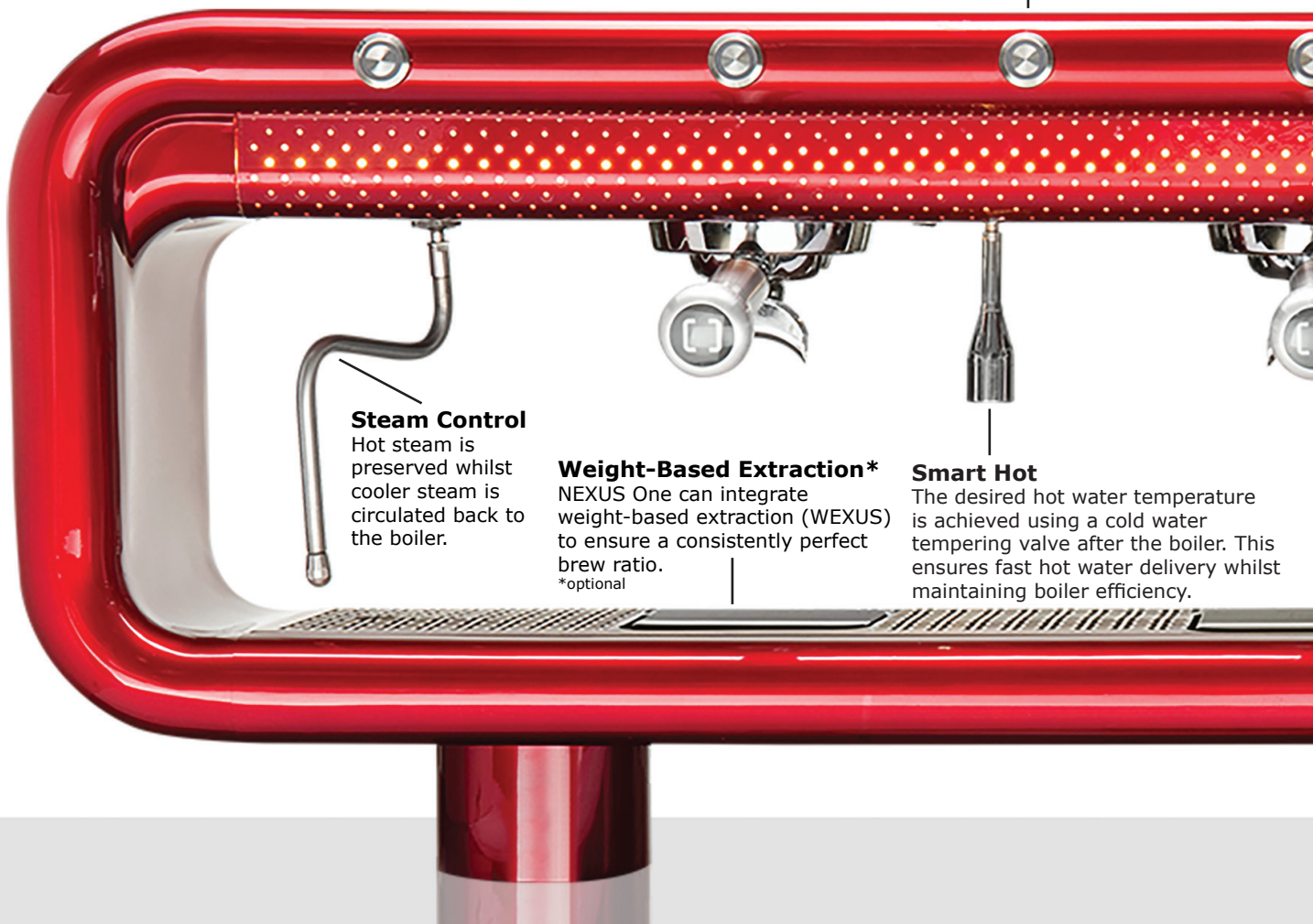
THE THEATRE OF SKILLS

User centred

Everything is designed with the customer experience in mind: the handle allows for easier and stronger grip, the chassis curvature ensures that nothing is blocked from the Coffee Master's line of sight, the machine's low profile allows for interaction with the audience.

Easy Touch

The buttons are designed to be simple and smart: short touch activates set programs, longer touch latches until pressed again, freeing the Coffee Master's hand to perform.



Steam Control

Hot steam is preserved whilst cooler steam is circulated back to the boiler.

Weight-Based Extraction*

NEXUS One can integrate weight-based extraction (WEXUS) to ensure a consistently perfect brew ratio.

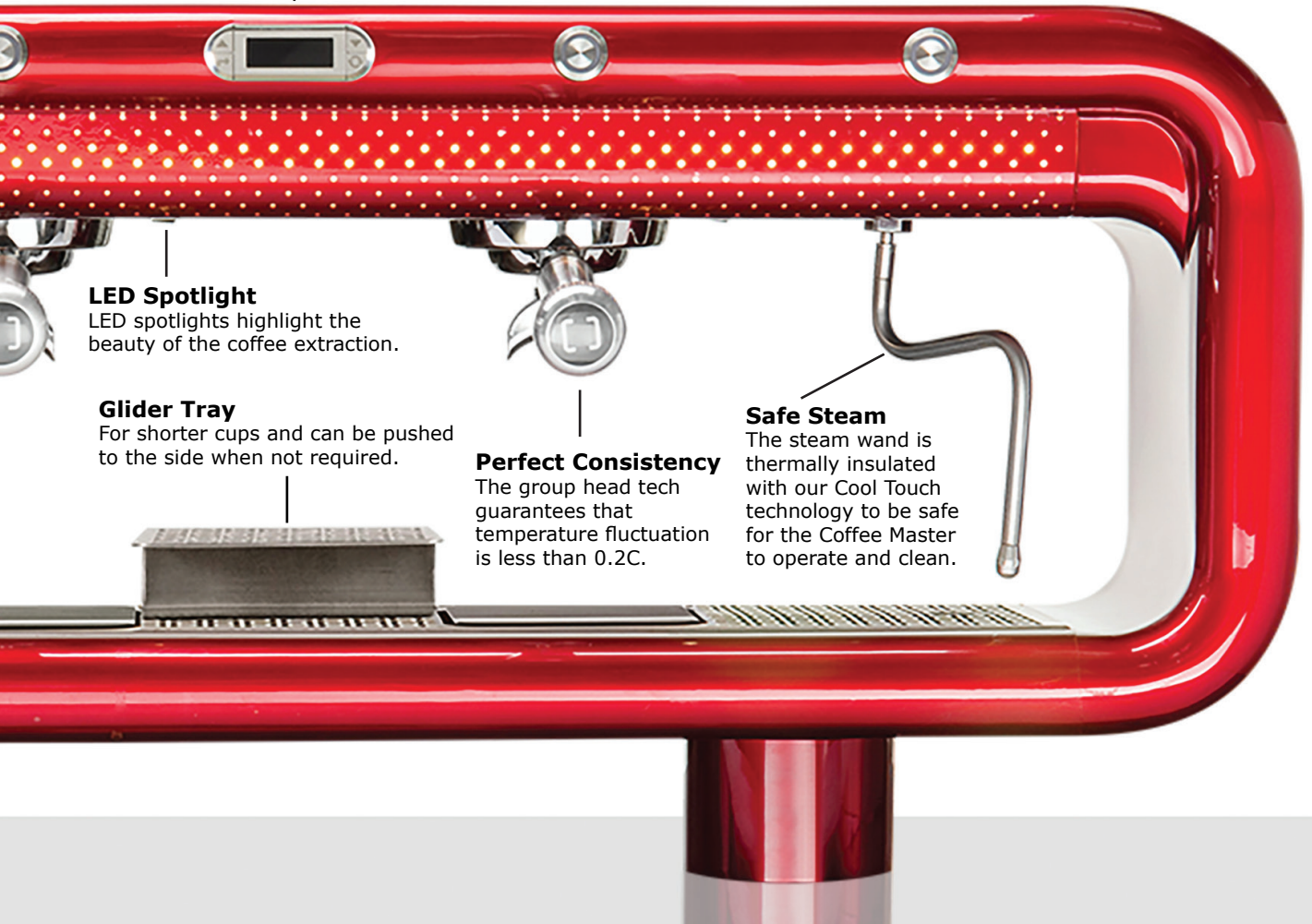
*optional

Smart Hot

The desired hot water temperature is achieved using a cold water tempering valve after the boiler. This ensures fast hot water delivery whilst maintaining boiler efficiency.

Function Display

The display presents the essential parameters when needed (shot timer, group and steam temp etc.). Everything else is managed by the software in the background.



LED Spotlight

LED spotlights highlight the beauty of the coffee extraction.

Glider Tray

For shorter cups and can be pushed to the side when not required.

Perfect Consistency

The group head tech guarantees that temperature fluctuation is less than 0.2C.

Safe Steam

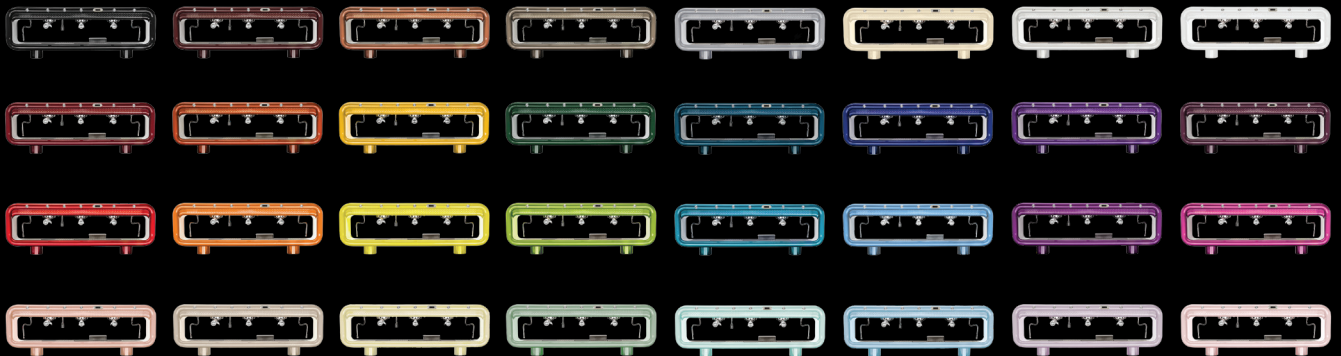
The steam wand is thermally insulated with our Cool Touch technology to be safe for the Coffee Master to operate and clean.

RADIUS ONE

32 FREE COLOURS TO BLEND IN OR STAND OUT

Not only do we offer NEXUS One standard in stylish Onyx Black and Jasmine White, we also offer our exclusive Radius Colour Chart: a carefully curated collection of 32 colours for you to pick from. Colours range from metallics, solid colours and satin finishes. So, which colour will you pick?

If you require a custom colour or would like to add branding to your machine, our designers will work with you to create a NEXUS One exclusive and unique to you. This service is complimentary in our NEXUS Pro Package.



NEXUS ONE

TECH SPECS



UNITS/VERSION	2 Group - 2 Steam -1 Hot Water	3 Group - 2 Steam - 1 Hot Water
BODY	Stainless steel - 304/316 - Acrylic polyurethane with clear-coat	
BOILER	14 Litre steam - 1 Litre coffee (per group)	17 Litre steam - 1 Litre coffee (per group)
HYDRAULICS	Digital - adjustable steam and coffee temperatures made with copper, brass and stainless steel	
GROUP	2 x brass/stainless steel - Composite	3 x brass/stainless steel - Composite
STEAM	Dedicated Boiler copper - stainless-steel - 1.2 or 1.5mm supplied	
HOT WATER	Built in Economiser Electronic Dosage	
CUP WARMER	Optional accessory - stand alone	
ELECTRONICS	PID controlled heating, Micro-computer PCB (programmable)	
DOSAGE SYSTEM	Volumetric or Extraction Weight Based (Wexus)	
POWER	5200w/7300w (steam 4500w, coffee 1300w per group, pump 180w)	10100w/9700w (steam 5200w, coffee 1300w per group, pump 180w)
VOLTAGE	220-240VAC 50/60Hz - (240VAC - 32AMP)	220-240VAC 50/60Hz - (240VAC - 40AMP)
DIMENSIONS CTU* UCU** A-Hydra UCU-B-Elec	L: 925 (36 7/16"), D: 230 (9"), H: 405 (15 15/16") L: 710 (27 15/16"), D: 346 (16 9/16"), H: 512 (20 3/16") L: 604 (23 14/16"), D: 346 (16 9/16"), H: 142 (5 9/16")	L: 1200 (48 11/16"), D: 230 (9"), H: 405 (15 15/16") L: 860 (33 14/16"), D: 346 (16 9/16"), H: 512 (20 3/16") L: 604 (23 14/16"), D: 346 (16 9/16"), H: 142 (5 9/16")
WEIGHT	95kg (CTU 40kg, UCU Electrical 15kg, UCU 40kg)	110kg (CTU 50kg, UCU Electrical 15kg, UCU 45kg)

NEXUS PRO

EXCELLENCE IN COFFEE ARTISTRY

Upgrade your NEXUS One to our NEXUS Pro package. This package provides you with the complete AREMDE experience to improve workflow and tailor your NEXUS One to your branding.



AREMDE NEXUS One Volumetric or Wexus model.



Free custom colour and addition of logo.



Extended warranty of 3 years.



MODUS One, our modular undercounter system with integrated cup warmer trays included.



INCLUDING MODUS

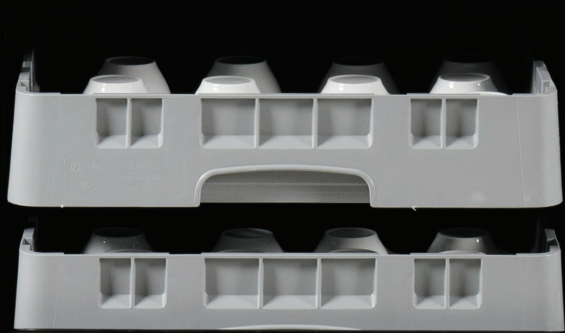
IMPROVE WORKFLOW AND EFFICIENCY

MODUS One uses the standard racks from the dishwasher as the place-holder to warm your coffee cups. Using the under counter boiler as the heat source, you conserve energy, tidy things up and save time.

There's just no need anymore to place those cups one by one on top of the counter after cleaning them. Just slide them all in on top of the boiler unit and they are heated and ready to use at a consistent temperature. Want to store your paper cups next to it? No problem. There is a MODUS element for that as well.

MODUS is included in our NEXUS Pro package.





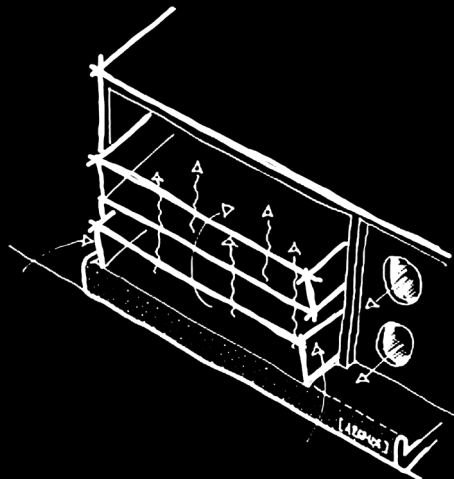
MODUS ONE

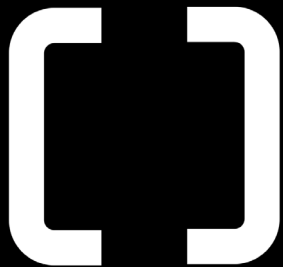
TECH SPECS

UNITS/VERSION	MODUS ONE	
BODY	Stainless steel - 304/316 - Powder coat	
THERMAL INSULATION*	Stainless steel/Fiberglass	
SIZE	2 GROUP	3 GROUP
FEATURES:		
DISH WASHING TRAYS	2	2
CUP DISPENSER	2 (1x SMALL 3200/1x MEDIUM 3400)	4 (1x SMALL 3200/3x MEDIUM 3400)
COLOUR	Satin Black	
DIMENSIONS: MODUS ONLY	L: 660 (25.9"), D:550 (21.6"), H:368 (14.5")	L: 900 (35.4"), D:550 (21.6"), H:368 (14.5")
DIMENSIONS: MODUS AND NEXUS**	L: 660 (25.9"), D:550 (21.6"), H:827 (32.6")	L: 900 (35.4"), D:550 (21.6"), H:827 (32.6")
WEIGHT	40KG	60KG

*MODUS One is not an electrical device

**Installation height- Modus /Mounted on Nexus UCU adjusted to the lowest setting





AREMDE COFFEE FUTURE REMADE