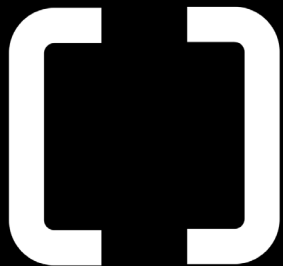




STYLUS ONE
IMAGINATION
NOT INCLUDED



WWW.AREMDE.COM.AU

@AREMDEOFFICIAL

INFO@AREMDE.COM.AU

AREMDE

UNLEASHING THE POWER OF CREATIVITY

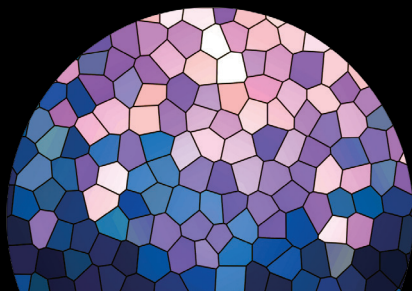
First, we introduced our breakthrough coffee machine, NEXUS One as the Theatre of Skills for all professional coffee masters of the world. Now we proudly present STYLUS One, the first fully customisable coffee machine the industry has ever seen: a true canvas of creativity. With all the tech specs and services you can expect from AREMDE.

The only thing we do not provide is that one special feature: your own imagination. Combine it with the unlimited customisation possibilities of STYLUS One and have your coffee future remade.



STYLE IT

WITH PICTURES,
TEXTURES, COLOURS
AND LOGO'S TO BOOST
YOUR BUSINESS
IDENTITY TO THE MAX



STYLUS ONE

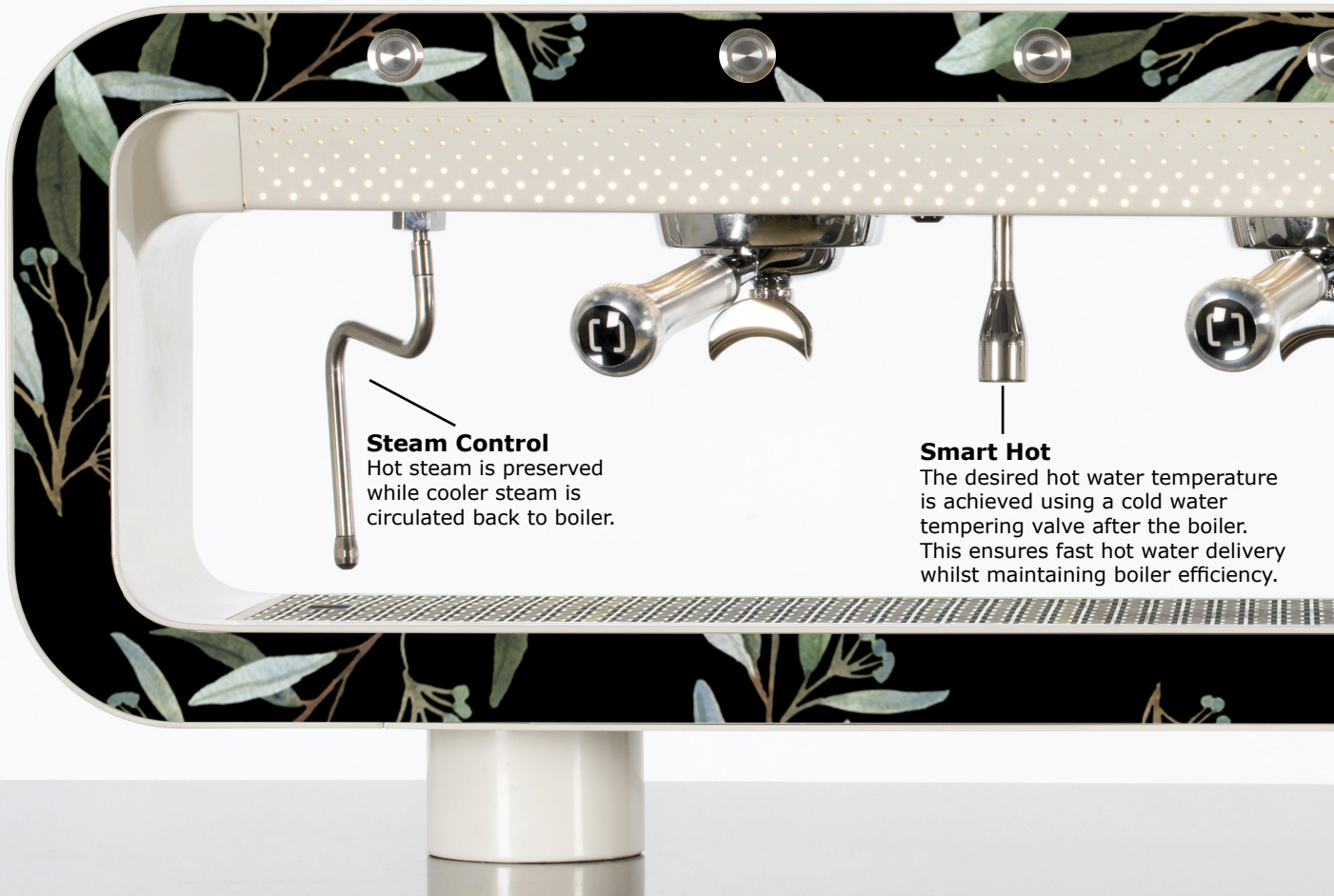
THE CANVAS OF CREATIVITY

User centred

Everything is designed with the customer experience in mind: the handle allows for easier and stronger grip, the chassis curvature ensures that nothing is blocked from the Coffee Master's line of sight, the machine's low profile allows for interaction with the audience.

Easy Touch

The buttons are designed to be simple and smart: short touch activates set programs, longer touch latches until pressed again, freeing the Coffee Master's hand to perform.



Steam Control

Hot steam is preserved while cooler steam is circulated back to boiler.

Smart Hot

The desired hot water temperature is achieved using a cold water tempering valve after the boiler. This ensures fast hot water delivery whilst maintaining boiler efficiency.

Function Display

The display presents the essential parameters when needed (shot timer, group and steam temp etc.). Everything else is managed by the software in the background.

Fully Customisable

Customisable panels that are easily removed and interchanged. Choose from our standard body colours or create your own.



LED Spotlight

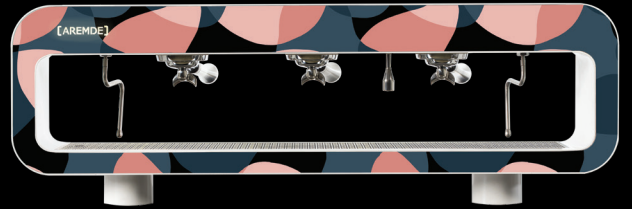
Since everything is about what is going to be in the cup, we ensured it stands out using LED spot lights to complement the experience.

Perfect Consistency

The technology integrated to the group head ensures temperature fluctuation is less than 0.2C. This ensures the perfect coffee extraction every time.

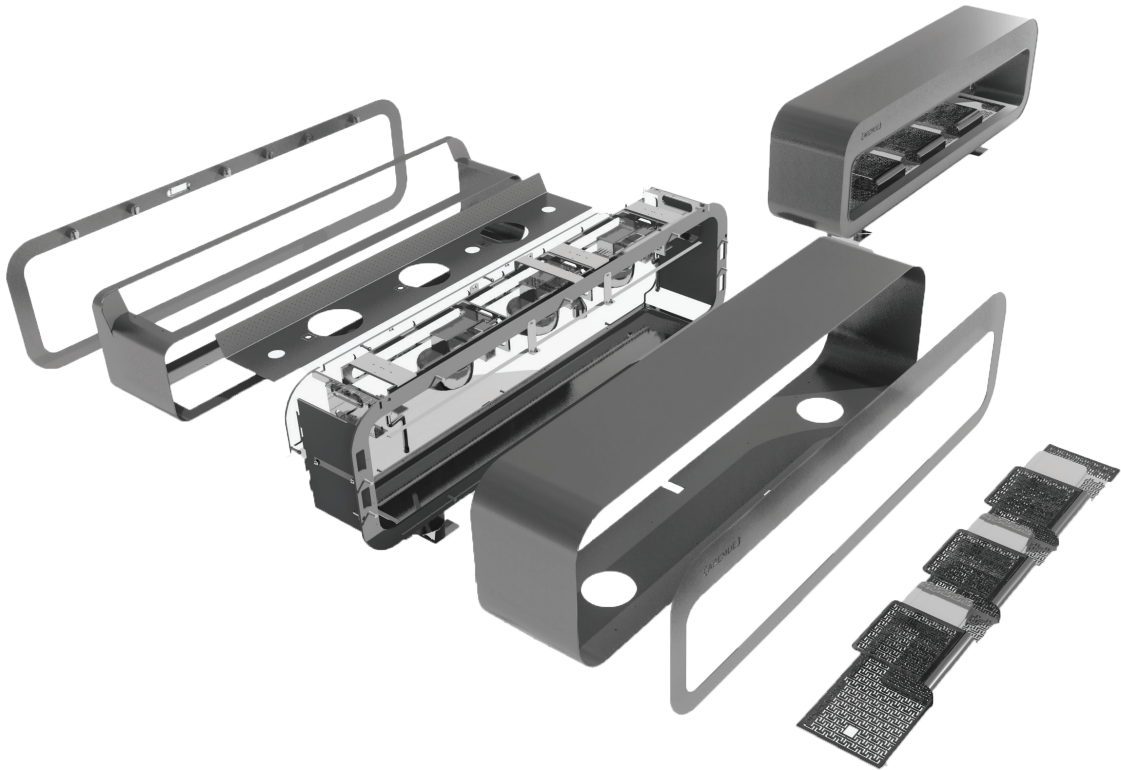
Safe Steam

The steam wand is thermally insulated with our Cool Touch technology to be safe for the Coffee Master to operate and clean.



STYLUS ONE

CUSTOMISE IT
BACK TO FRONT



STYLUS ONE

ENDLESS POSSIBILITIES

STYLUS One is the ultimate canvas of creativity. Select one of our print-ready panel designs from our STYLUS One Pattern Guide or submit your own to our design team. Choose from our standard colours (Satin White/Satin Black) for your machine body.

Have a unconventional design in mind or looking for a custom colour? Work with our team of designers to create a STYLUS One that is as unique as you.

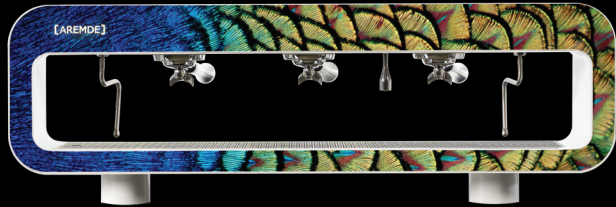
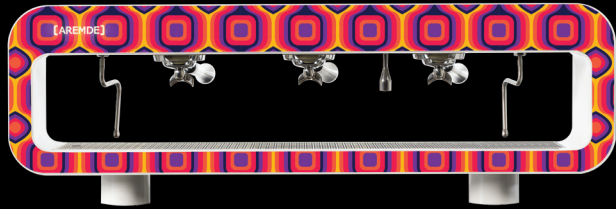
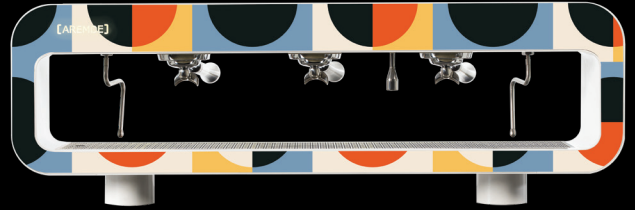


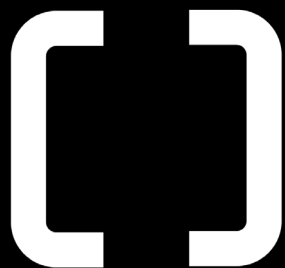
STYLUS ONE

TECH SPECS



UNITS/VERSION	2 Group - 2 Steam -1 Hot Water	3 Group - 2 Steam - 1 Hot Water
BODY	Stainless steel - 304/316 - Powder coated Removable front and back panels	
BOILER	14 Litre steam - 1 Litre coffee (per group)	17 Litre steam - 1 Litre coffee (per group)
HYDRAULICS	Digital - adjustable steam and coffee temperatures made with copper, brass and stainless steel	
GROUP	2 x brass/stainless steel - Composite	3 x brass/stainless steel - Composite
STEAM	Dedicated Boiler copper - stainless-steel - 1.2 or 1.5mm supplied	
HOT WATER	Built in Economiser Electronic Dosage	
CUP WARMER	Optional accessory - stand alone	
ELECTRONICS	PID controlled heating, Micro-computer PCB (programmable)	
DOSAGE SYSTEM	Volumetric or Extraction Weight Based (Wexus)	
POWER	5200w/7300w (steam 4500w, coffee 1300w per group, pump 180w)	10100w/9700w (steam 5200w, coffee 1300w per group, pump 180w)
VOLTAGE	220-240VAC 50/60Hz - (240VAC - 32AMP)	220-240VAC 50/60Hz - (240VAC - 40AMP)
DIMENSIONS CTU* UCU** A-Hydra UCU-B-Elec	L: 925 (36 7/16"), D: 230 (9"), H: 405 (15 15/16") L: 710 (27 15/16"), D: 346 (16 9/16"), H: 512 (20 3/16") L: 604 (23 14/16"), D: 346 (16 9/16"), H: 142 (5 9/16")	L: 1200 (48 11/16"), D: 230 (9"), H: 405 (15 15/16") L: 860 (33 14/16"), D: 346 (16 9/16"), H: 512 (20 3/16") L: 604 (23 14/16"), D: 346 (16 9/16"), H: 142 (5 9/16")
WEIGHT	95kg (CTU 40kg, UCU Electrical 15kg, UCU 40kg)	110kg (CTU 50kg, UCU Electrical 15kg, UCU 45kg)





AREMDE COFFEE FUTURE REMADE